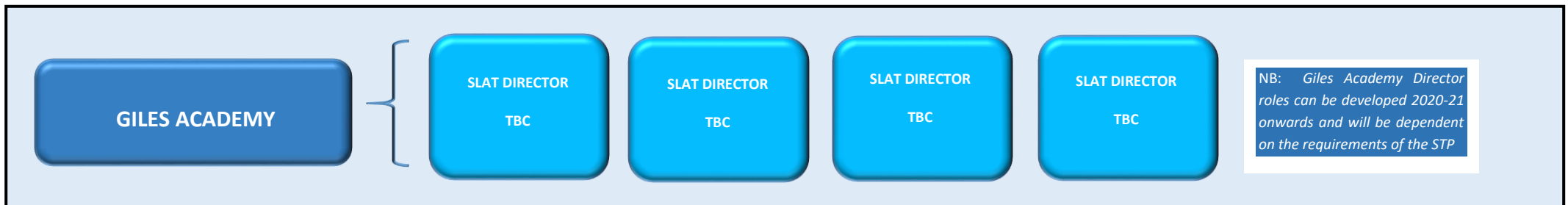
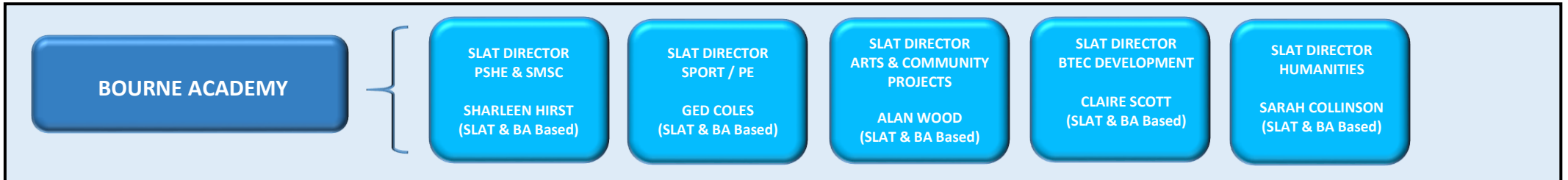


SLAT TEACHING DIRECTOR MODEL 2020/21

The roles of Directors will support meeting the requirements of the STP for each of the SLAT schools, dependant on requirements of each particular STP.

These roles replace the traditional leadership model and this structure will allow for the Trust to expand, creating an appropriate distributed leadership model; CPD opportunities for staff and enabling school improvement at a faster pace.



NB: Giles Academy Director roles can be developed 2020-21 onwards and will be dependent on the requirements of the STP